

Welcome

NATSIHEC

Guests



Batchelor
Institute

Administration ►
◀ Batchelor Area School

Batchelor Institute acknowledges our traditional custodians

15th – 16th June





Batchelor Institute is Australia's only dedicated, publically funded, dual-sector Indigenous tertiary education provider. Servicing the education, training and research needs of Aboriginal and Torres Strait Islander peoples, Batchelor Institute has a special focus on remote Northern Territory communities and also attracts higher education students from across Australia. Batchelor Institute provides culturally safe and sustainable education and training.

Hotels

Our recommendations of hotels to book with, please note that there are many other hotels available.

Early bookings are advised as the V8 Supercars are in Darwin on the following weekend (17th - 18th June).

Vibe Hotel - Darwin Water Front (08) 8982 9998

Doubletree by Hilton - Esplanade (08) 843 3600

Airport Resort - Darwin (08) 8920 3333

Hire cars

Avis - 16 36 33

Thrifty - (08) 8924 2480

Note that there are other hire car companies available.

Transport

We will be providing transport by bus if you would prefer not to drive and you will need to contact Tamara Austin to arrange pick-up points.

Contact

Ms Tamara Austin will be the Batchelor point of contact and you can reach her via email at

tamara.austin@batchelor.edu.au or call her on (08) 89397187.

Please note that we will organise morning and afternoon teas along with lunch for all participants.



**Batchelor
Institute**

2017

Thursday 15th June | Batchelor Campus

Graduation Ceremony

Thursday afternoon is the Batchelor Campus Graduation Ceremony to be held on the Graduation Lawns. We extend an invitation to all NATSIHEC members to attend and/or join the Academic procession.

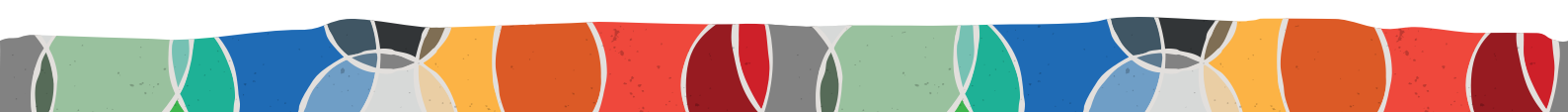
Graduation commences at 2.00pm and is followed by a picnic on the lawns.

For those wishing to participate in the procession, you will need to be gowned and assembled behind Orange Building 1 by 1.45pm

We would encourage you to bring your own gown to participate in the academic procession - we do have a small number of gowns available if required. Please contact Tamara Austin to check availability.

Refreshments will be provided on the day.

Buses will depart from Batchelor at 6.00pm for Darwin.

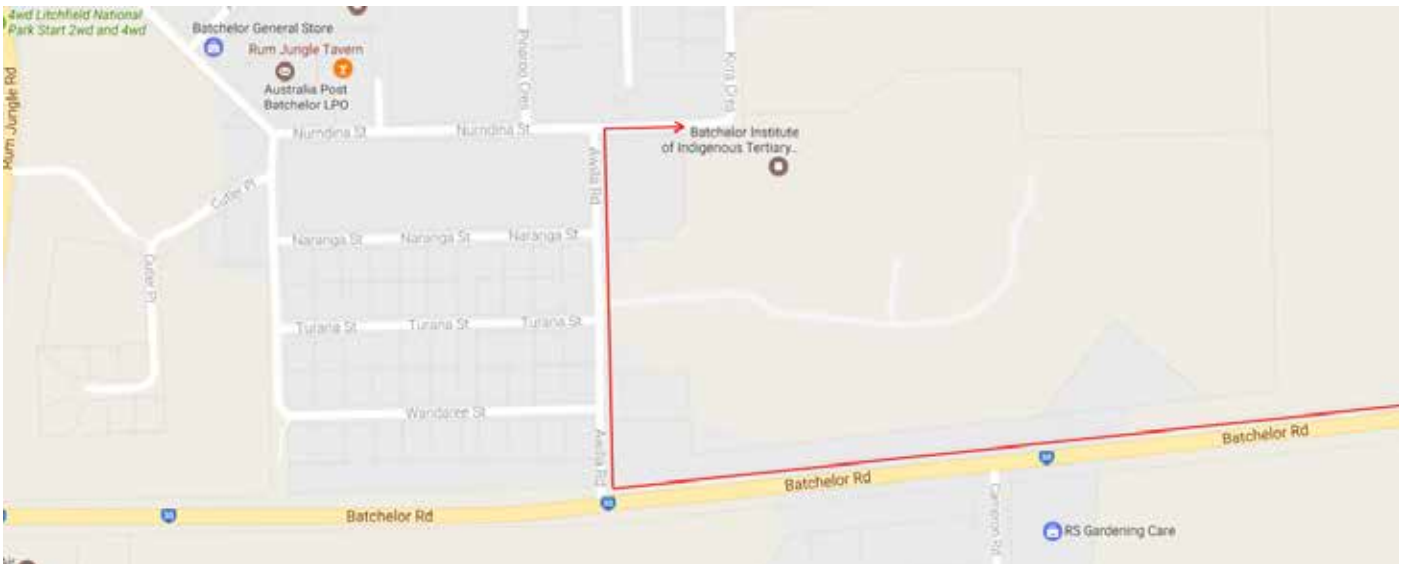


How to get here



Driving from Darwin to Batchelor is around 100 kms and will take approximately 1.15 hours to 1.5 hours

- Leave Darwin via Tiger Brennan Drive
- Follow this road past Winnellie and Hidden Valley until you merge with the Stuart Highway. You will not need to veer off or turn onto the Stuart Highway, it will merge with the Tiger Brennan Drive, you will simply need to continue along the road on which you are travelling.
- You will know when you are on the Stuart Highway when you see the suburbs of Palmerston to your right.
- Continue along the Stuart Highway for approx 70 kms until you see the turnoff to Batchelor township.
- Turn right at Batchelor Road indicated by a large sign promoting Litchfield National Park



- You will travel along Batchelor Road for 10 kms before coming to the township of Batchelor.
- Turn right at Awilla Road then at the end of Awilla Road turn right again along Nurndina Street
- You will then be able to see the flagpoles and sign of Batchelor Institute, as shown on the front of this booklet.

Your function has been booked in Purple Building 9, so the most convenient parking would be in front of the Library (Building 8). You will find plenty of free all day parking there.



Batchelor Institute



Both-Ways ... Tertiary Education and Research

